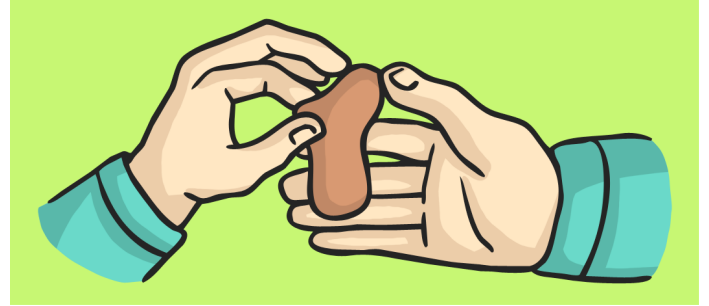


Working with Clay: Techniques to Try



Rolling a ball of clay.



Pulling and pinching the clay with your fingers.



Rolling snakes with the clay.



Creating holes or hollows.



Smoothing out the clay with your fingers.



Adding pieces to your sculpture.



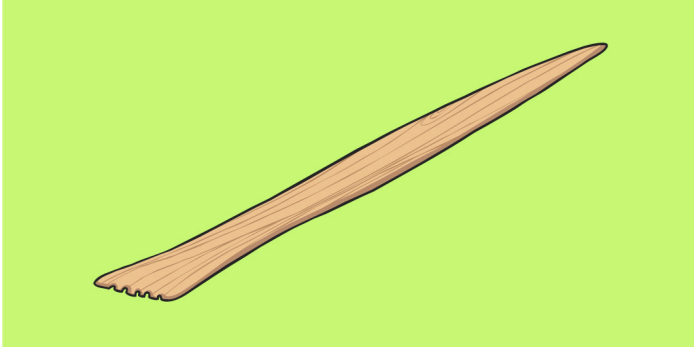
Squeezing the clay.



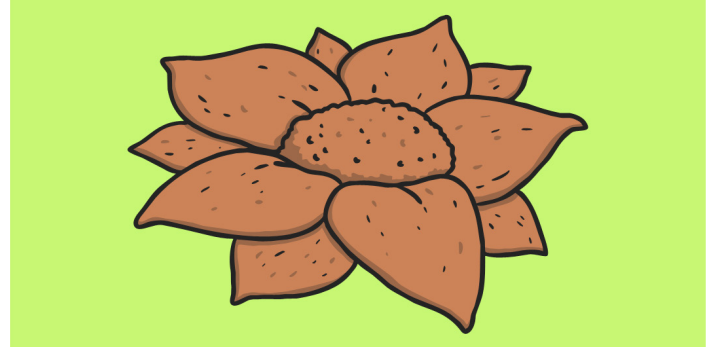
Scratching details with tools.

Working with Clay:

Top Clay Tips



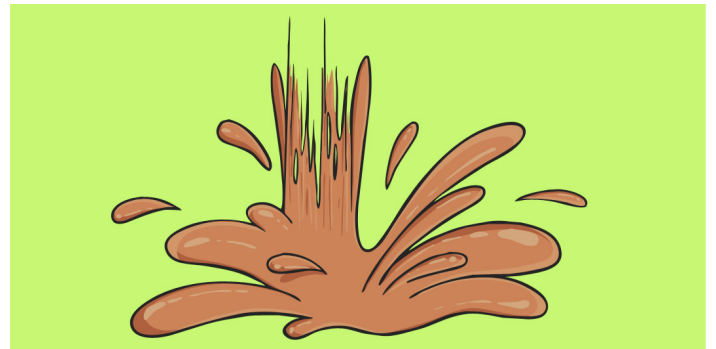
Use different tools to create different textures.



Clay can be brittle and fragile if moulded too thinly.



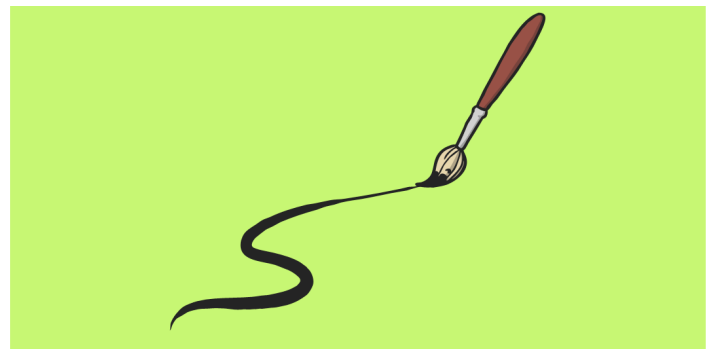
When the clay becomes too sticky, add a little water.



If you add too much water, the clay will become too slippery to work with.



Most clay needs to be fired in a big oven called a kiln to make it hard and strong. Air-drying clay dries hard without being fired.



When it has dried, you can varnish your model or decorate it by painting.